



Fanatec F1 Esports V2 conversion instructions

Your conversion kit contains

- SRM conversion kit (black or red)
- 6 x M5 16mm Cap bolts for attaching 70mm QR
- 3 x M5 16mm Dome bolts for attaching 50.8mm QR

Step one – Open the wheel.

To open the wheel, you need to remove 4 M4 bolts from the front as shown and the top M3 bolts. Turn the wheel over and remove the other M3 bolts at the top together with the 2 screws just below the shifters.



Once the bolts are removed the back of the wheel will lift allowing access to the inside.

STEP 2 – Remove the old QR

Carefully unclip the QR cable as shown.

Undo the QR pin bolts and remove this from the wheel by easing the cable and plug out.



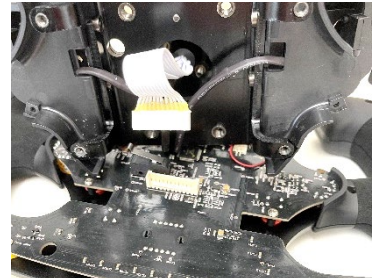
STEP 3 – Fitting the conversion kit

Take the conversion kit out of its box and remove the bolt bag from inside. The black cable will stretch out.

Pass the black 8 core cable through the back of the wheel where the pin plug used to go. Fit the kit to the back of the wheel where the QR would have gone. Use 4 Fanatec QR bolts to attach the kit to the back of the wheel. Do not overtighten.



Plug the black cable into the wheel PCB



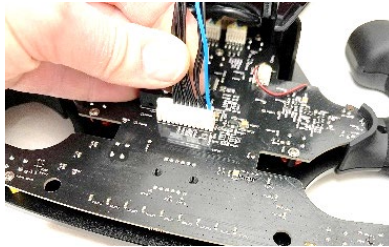
STEP 4 – Putting the wheel back together

Place the back onto the front and gently ease it into place. Be sure that the black cable connecting the PCB's does not get caught or trapped.

Start by attaching the 4 M4 bolts on the front as they are metal to metal

Put the other bolts back in place. Don't forget the ones below the shifters.

You can now attach your wheel to a QR, spacer or direct to your wheelbase. There are 6 x 70mm threaded holes for a 70mm and 3 x 50.8mm for a 50.8mm QR



Using your converted wheel

Remember that your wheel is no longer a Fanatec wheel in windows, so you cannot use any Fanatec software or drivers with it.

You do not need to update any firmware. Everything is ready to go.

Buttons, Shifters and Rotary Encoders / Switches will work with standard windows drivers so there is no need to install specific drivers.

For LED's, Display and Rumble features (if on the wheel) please use the free Fanaleds software www.fanaleds.com or you can use SLI Max Pro but there is a change for this software.

If you have any delay or strange LED / Display issues you may need to disable in game direct control of devices. See <https://www.simracingmachines.com/WebShop/boards/forum/1/help-and-support>

I hope the conversion went well. If you have any problems or questions, please sent me an email to sales@simracingmachines.com

I hope you will enjoy many hours of racing.

Simon Maltby

