



SIM RACING MACHINES

Fanatec Formula V2, V2.5x and V2.5 conversion instructions

Your conversion kit contains

- SRM conversion kit (black or red)
- 6 x M5 16mm Cap bolts for attaching 70mm QR
- 3 x M5 16mm Dome bolts for attaching 50.8mm QR

Step one – Open the wheel.

To open the wheel, you need to remove 8 bolts from the front and 4 on the back.

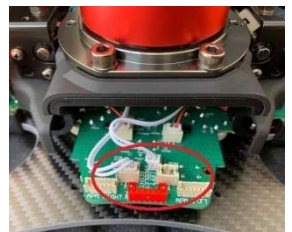
Notice that the top and bottom centre bolts are different. The taller cap bolts are from the top.

Turn the wheel over and there are 4 more bolts to remove. The bolts by the shifters are very small and require a cross head screwdriver. You may need to loosen the shifter paddle to get to them on the Formula V2. If your wheel has the Advanced paddles with clutch you will need to remove the shifters completely to get to the screws. Take care not to lose them



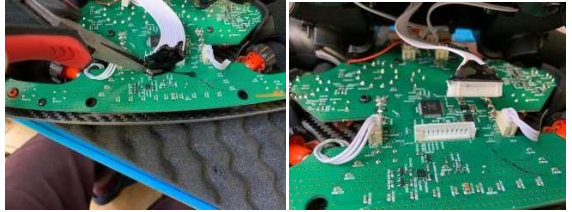
Next unplug the shifter wires. They may be as shown or in the larger plug below if you have magnetic shifters on the wheel.

Now the back of the wheel with the QR will lift away from the front of the



wheel. The only thing left attaching it is the QR cable. Carefully lift the back off and put it on end so you can remove the QR cable.

Fanatec like to apply glue and it can be a mess, but it is quite brittle I remove it with plyers and a gentle twisting motion. Take care not to pull the PCB header off.



Now that you have the QR removed, put the front of the wheel aside.

STEP 2 – Remove the old QR

Next, we need to remove the QR. It is attached by 4 bolts. Remove the bolts and washers and set aside, these will be needed to fit the conversion kit.

Remove the QR, it can be quite tight so just gently pull it off, you may need to undo the pin plug (see below) if the QR will not come off.



New wheels do not come with the QR fitted just the pin plug.

Next, we remove the QR cable and pin assembly. Remove the 4 long bolts and then pull the pin part up and remove it with the cable. You will need to bend the cable to get the plug through.



Now you have the wheel ready to attach the conversion kit.

STEP 3 – Fitting the conversion kit



Take the conversion kit out of its box and remove the bolt bag from inside. The black cable will stretch out.

Pass the black 8 core cable through the back of the wheel where the pin plug used to go.

Apply the kit to the back of the wheel where the QR would have gone. Use 4 bolts to attach the kit to the back of the wheel. Do not overtighten. The kit should now be attached with the black cable hanging loose. If you need the new plug adapter attach it as shown above.

Plug the black cable into the wheel PCB – use a little glue gun glue if you have any to just hold it in place. Do not get any glue over the PCB components, you only need a little and it is not a problem if you don't have any. It just stops the plug working loose over time.



STEP 4 – Putting the wheel back together

Place the back onto the front and gently ease it into place. Be sure that the black cable connecting the PCB's does not get caught or trapped.

Start by attaching the 4 centre bolts on the front as they are metal to metal – remember the top and bottom are different.

Reattach the shifter cables.

You may want to test the wheel functions properly before putting the other bolts back. To do this simply plug the coiled cable into a USB port and test using DIView or JoyStick Test and Fanaleds to see that all the buttons are working.

Put the other bolts back in place. Don't forget the tiny ones by the shifters.

You can now attach your wheel to a QR, spacer or direct to your wheel base.



There are 6 x 70mm threaded holes for a 70mm and 3 x 50.8mm for a 50.8mm QR

Using your converted wheel

Remember that your wheel is no longer a Fanatec wheel in windows, so you cannot use any Fanatec software or drivers with it. The buttons, shifters and encoders are all now using standard windows drivers. The display and LED's need software to use them.

LED's and display: There are 2 software products that can be used to control the LED's and display. Fanaleds is free or you can use SLI Max Pro, which requires a \$5 licence. Only the top (rev) LED's work with the conversion, the side (Flag) LED's will not work. Simply install one of these and have it running before you enter your game. Some games will try to control the Display and LED's directly thinking the wheel is still a Fanatec product and this causes problems. You must disable any in game direct control.

The best place to look for instructions is on the SLI Max pro website.

[Getting started with SLIMax Manager \(video tutorials\) – Page 7 – EKSIMRacing Website](#)

We hope the conversion went well. If you have any problems or questions, please send us an email to sales@simracingmachines.com

We hope you will enjoy many hours of racing.