

Conversion Kit for McLaren GT3 V2 Wheel

Thank you for purchasing our Fanatec conversion kit.

These instructions will help you fit the kit to your wheel. It is recommended that you read through the instructions fully before starting work on your wheel.

Please remember that fitting this kit to your wheel will invalidate any remaining Fanatec warranty.



Included with your conversion kit...



1 Conversion kit



6 M5 20mm Cap head bolts (QR mounting)



3 M5 12mm Dome bolts (QR mounting)

These fitting instructions are for the following wheels...

1. McLaren GT3 V2

Before you start – If you can please update the wheel firmware to V40 using a Fanatec wheel base. At the moment the wheels ship with V37 and the display does not work with the conversion (we are working on this)

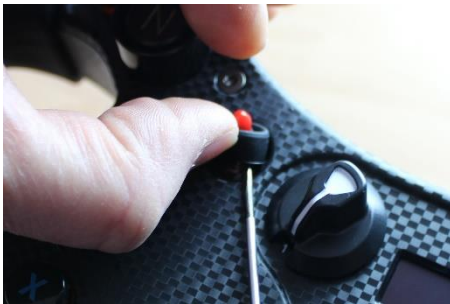


Step 1: Opening the wheel.



To open the wheel you need to remove the screws and covers shown.

Start by removing toggle covers and nut underneath (as marked in Purple)



Gently ease the rubber cover off. A small screwdriver helps get it started, then just use your fingers to pull it off. Then undo to nut using an 8mm socket. They are only hand tight. You can leave the nut and washers in situ or remove them.

Next, remove the rotary knobs (as marked in Green)



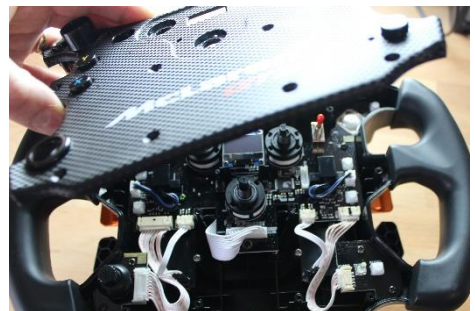
Ease off the knobs, they just pull off. You may need a little help from a plastic tool like the Car trim remover I use. Then undo and remove the nut using a 12mm socket, again they are only hand tight. You can leave the washer in place.

Next, remove the 10 torx headed bolts (marked in Red)



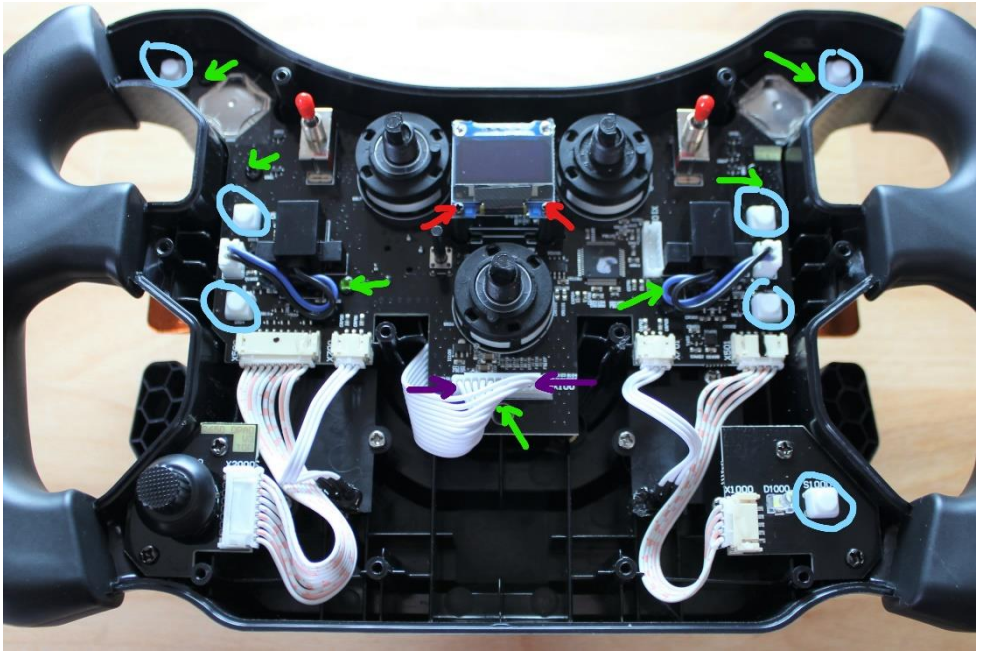
Use a T10 Torx bit to undo and remove them all. You should have these parts set aside.

You can now remove the wheel cover.



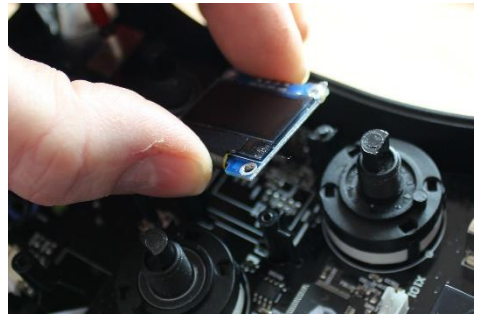
Just pull the cover up. If you left the washers on, be careful to keep it flat. Put the cover aside together with any buttons that may have fallen out.

Step 2: Undo the wheel PCB



Start by removing all the white button caps so they don't fall off and get lost (shown in light blue)

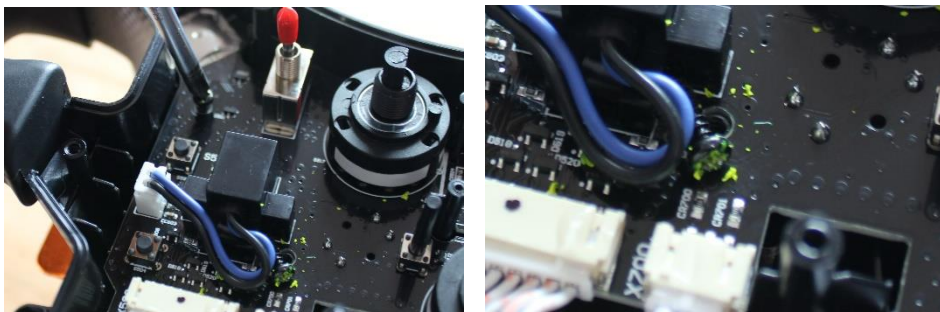
Next, remove the display by undoing the 2 screws marked in red. The display will just lift off.



Now, remove the PCB plug shown in purple. This just pulls up. It may be fixed with a soft clear glue, but should come off easily.



Next, remove all 7 of the cross headed screws that hold the PCB in place (As shown in green)



You may find there is green sealant on 2 of the screws. You need to dig this out of the cross head screw to get the driver in. Put all 7 screws aside.

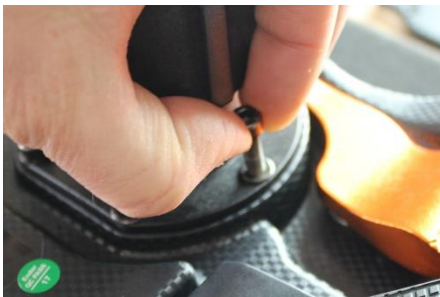


Step 3: Remove the Fanatec QR

Turn the wheel over.



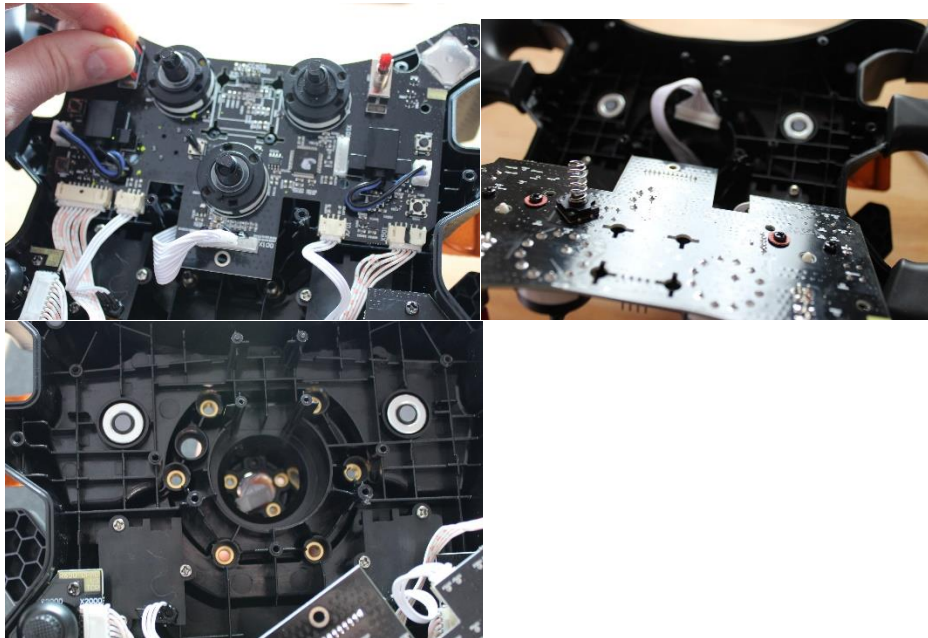
Remove the 6 bolts holding the QR onto the wheel using a 4mm hex key. Then pull the QR off.



Now, remove the QR pin plug. Remove the 5 bolts with a 3mm Hex key



Before you can remove the pin plug you need to bend back the wheel PCB and push the white cable through the wheel.



Now you can attach the conversion kit to the back of the wheel.

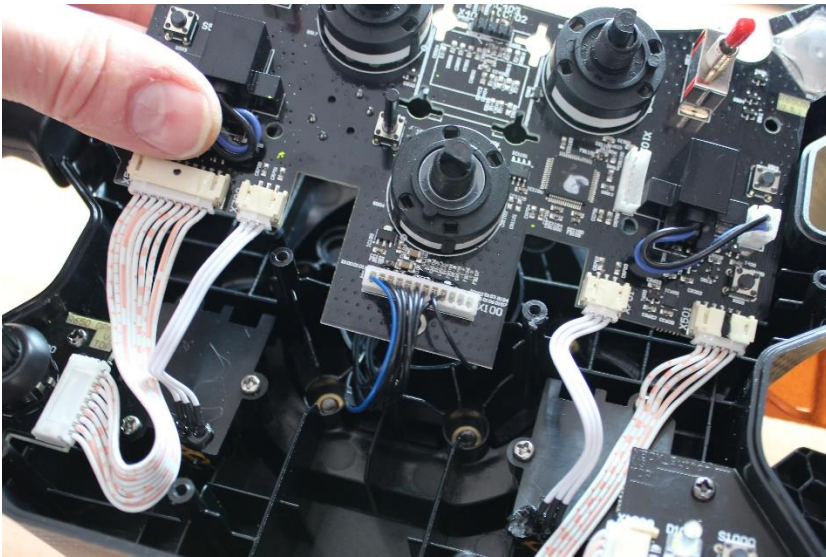
Thread the cable through the hole into the wheel



Then put the kit against the wheel and fix with 4 of the bolts removed from the old QR. Remember the wheel is plastic, so do not tighten the bolts too firmly.



Turn the wheel back over and feed the cable as shown and press it into the PCB socket.



Replace a couple of the PCB screws, one on each side. Do not fit them all yet.

Then refit the display. It has a plug that goes onto the 4 pins on the PCB and then fit the 2 screws to hold it in place.



Before continuing to re-assemble the wheel I recommend testing it at this point just to be sure it's working properly.

Install FanaLEDs for the display: <https://www.fanaleds.com/>

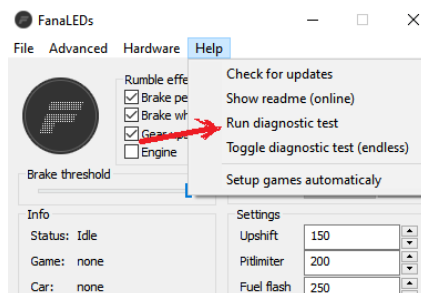
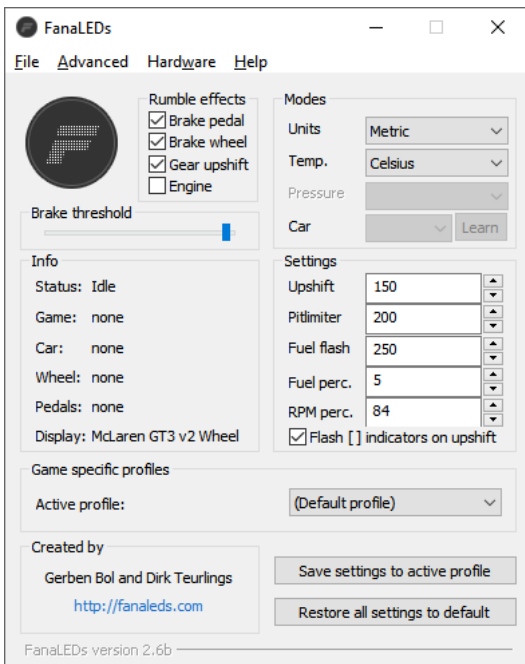
Install Joystick-test for buttons:

https://www.simracingmachines.com/downloads/joysticktest_092.zip you may need to install DX9 as well <https://www.microsoft.com/en-gb/download/details.aspx?id=34429>

To test the wheel plug it into a USB port on your PC

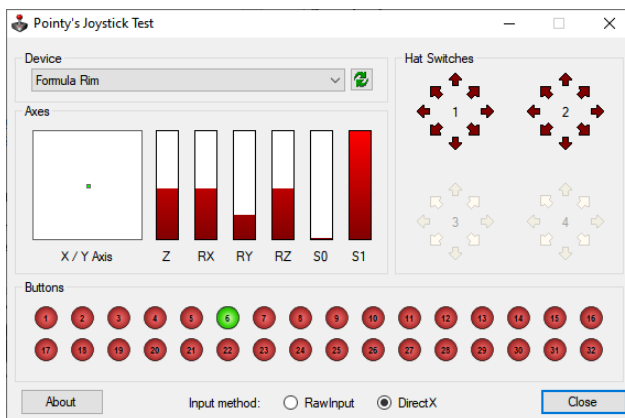
Open FanaLEDs and confirm that you see this. The display should show as McLaren GT3 v2 Wheel.

If you have wheel firmware V40 on the wheel you can test the display and it should flash up SLI



In Joystick test you should see something like this.

Check the buttons, shifters, clutch paddles and rotaries all work.

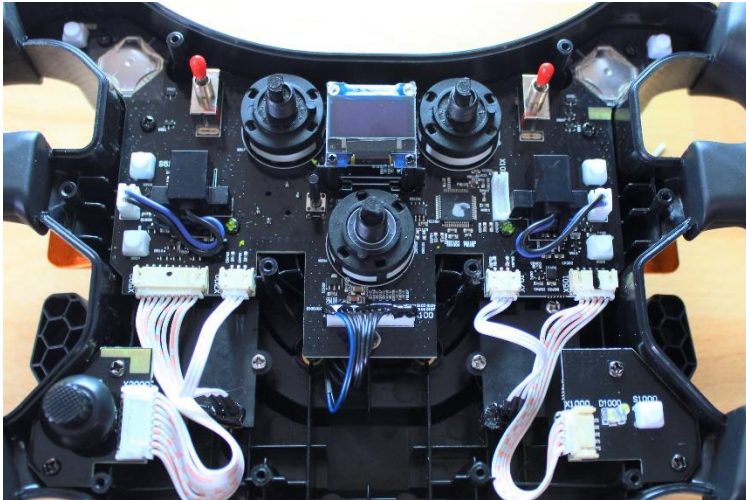


If everything worked ok, you can finish re-assembling the wheel.

Put the rest of the cross headed screws back in to hold the PCB in place.

It is a good idea, if you have it available to add a small amount of glue gun glue to the PCB plug. Just get it on the top don't let it drip right down to the PCB as there are components there.

Put the white button covers back on



Now you can put the wheel cover back on.

Remember to put any buttons that fell out back first. Often the "N" button falls out. Rest the cover on the wheel and ease it into place. Check the tiny setup button is through it's hole properly



Start by putting the 3 nuts back on the rotary switches. Just hand tight.

Then put the nuts back on the toggle switches. The washers for these slot into the switch, so spin them until the drop into place. Again just hand tighten the nuts.

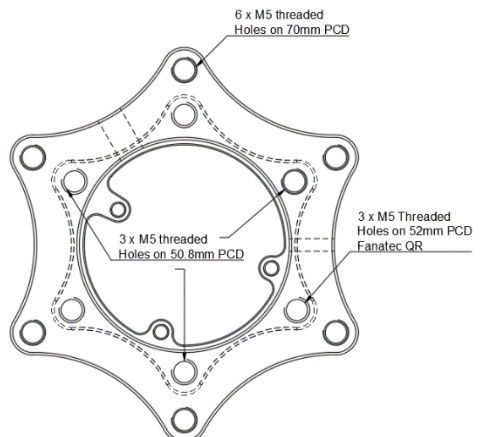
Finally, put back the 10 torx screws. These go into plastic so do not do them too tight.

And that's it, you are all done.



Fitting a QR or the wheel to your wheel base.

The back of the wheel with the conversion kit has threaded bolt holes to accept most quick releases or spacers. The bolts supplied with the kit are to use when attaching the conversion to a QR.



I hope your conversion kit gives you many years of use.

If you have any questions please let me know

Simon Maltby

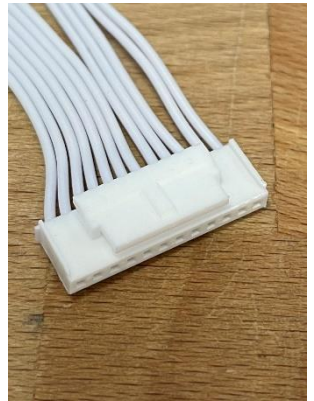
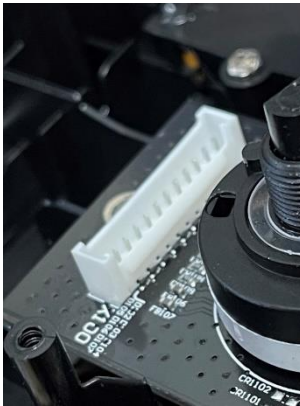
Sim Racing Machines

sales@simracingmachines.com

ADDITIONAL

New McLaren wheels have started to ship with a different PCB socket / Plug after August 2021.

The new plug looks like this...



If you have this plug you will need to use the adapter included with your kit if you told me the wheel was after August 2021.

