



## How to open the Universal Hub V1

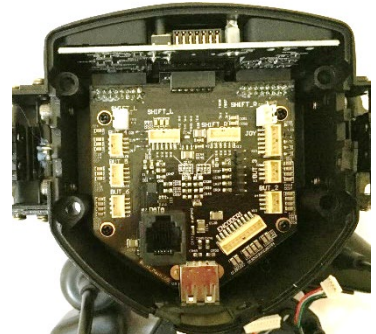
1. Open up the Hub by removing the 4 bolts shown, you do not need to remove the wheel rim from your hub.



2.

3. Remove all of the button and shifter connectors so that the inside PCB is clear of wires

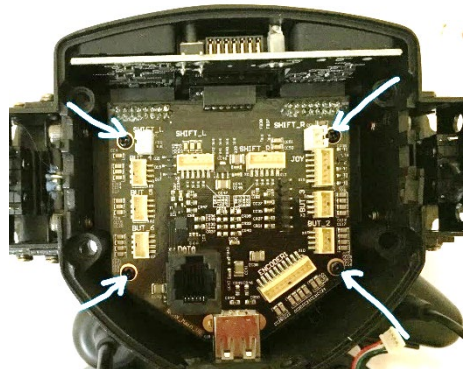
Also remove the little display by just sliding it out.



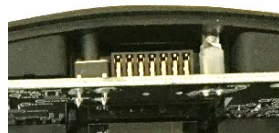
4. Remove the PCB  
Start by removing the 4 screws holding the PCB in place.

Now slide the PCB down towards the USB plug.

Newer versions of the Universal hub will allow you to just lift out the PCB together with the top button PCB, leaving the rubber buttons in place.



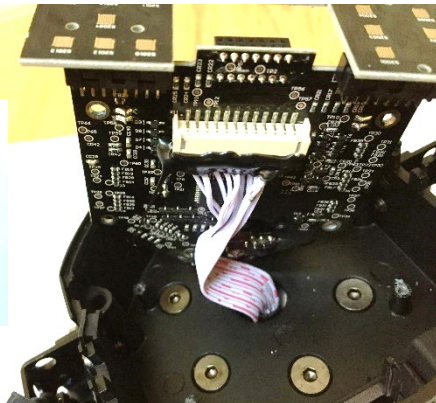
Older versions have the rubber buttons attached to the PCB and so you have to gently ease it out including the buttons. Pushing the buttons in from the top as they move helps... just take your time.



Be very careful not to break the LED and long stick button.

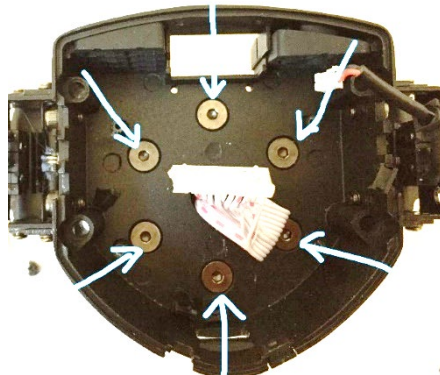
The PCB will come out of the casing and just be held on by the QR cable.

Most versions have glue holding the QR cable plug in place. This can either be softened with a hair dryer or I prefer to just pull it off. However, you remove it be very careful and gentle... do not pull too hard otherwise the hole socket will come off the PCB. I tend to use my fingernail or a set of blunt pliers and make small twisting motions to remove the glue in small pieces. Be very careful not to damage the components on the PCB near the plug.



You can now remove the Fanatec QR by undoing the 6 bolts and pulling the cable and plug through the centre hole.

HINT: If you manage to damage one of these bolts this will help. Obtain a Torx driver bit that is just bigger than the Hex bolt bit, so it does not quite fit. Gently hammer this into the bolt so it is secure. You should now be able to undo the bolt successfully.



You should now have everything disconnected and are ready to start installing the conversion kit.

